

OPERATIONALIZING SUSTAINABILITY

Driving Action in Material Purchasing



SAINT-GOBAIN

Feb 22
9:00 AM Pacific

AGENDA

- Introduction (5 min)
- CRE Sustainability (5 min)
- Saint-Gobain Strategy (15 min)
- The Future of Transparency (10 min)
- Q&A (15 min)



INTRODUCTIONS



Dennis Wilson
VP, ESG & Managing Director,
Saint-Gobain Circular Economy
Solutions NA, Saint-Gobain



Kathleen Egan
CEO & Co-founder, Ecomedes
Kathleen@ecomedes.com



Mission

Simplify and quantify
building material sustainability
across stakeholders

Corporate Sustainability Goals



CRE MARKET



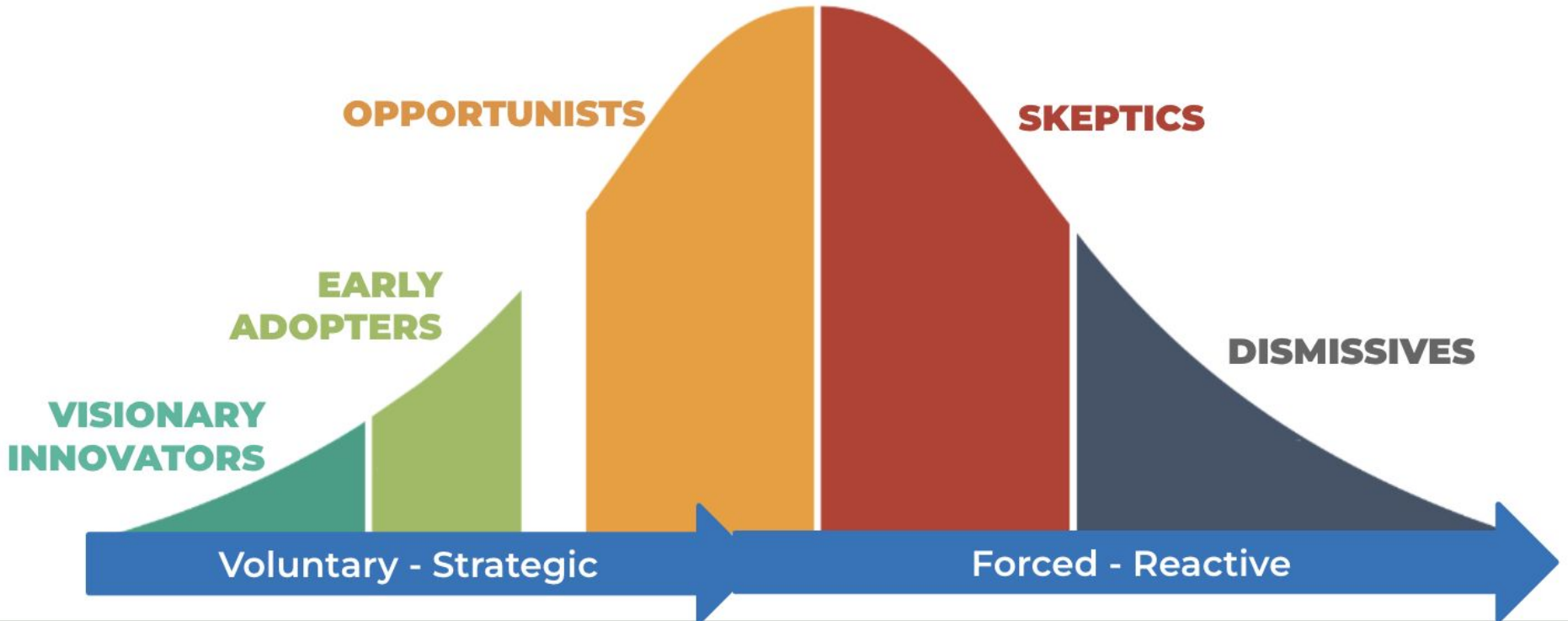
Why Now?

[CBRE Research May 2023](#)

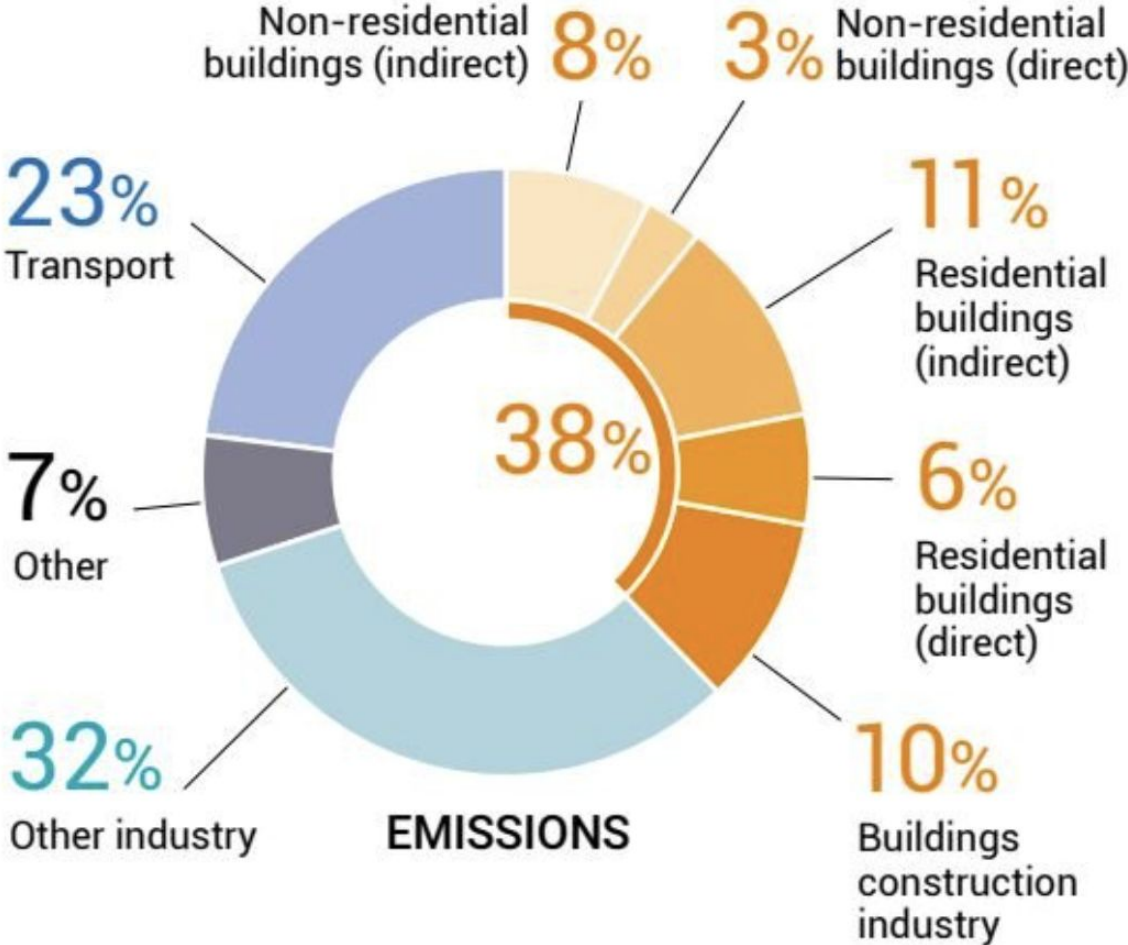
A survey of the international academic evidence indicates an **average gross premium for green building certificates of 6–8% (rents) and 14–16% (capital values).**

Sustainable Materials Adoption Maturity Curve

For CRE Owners

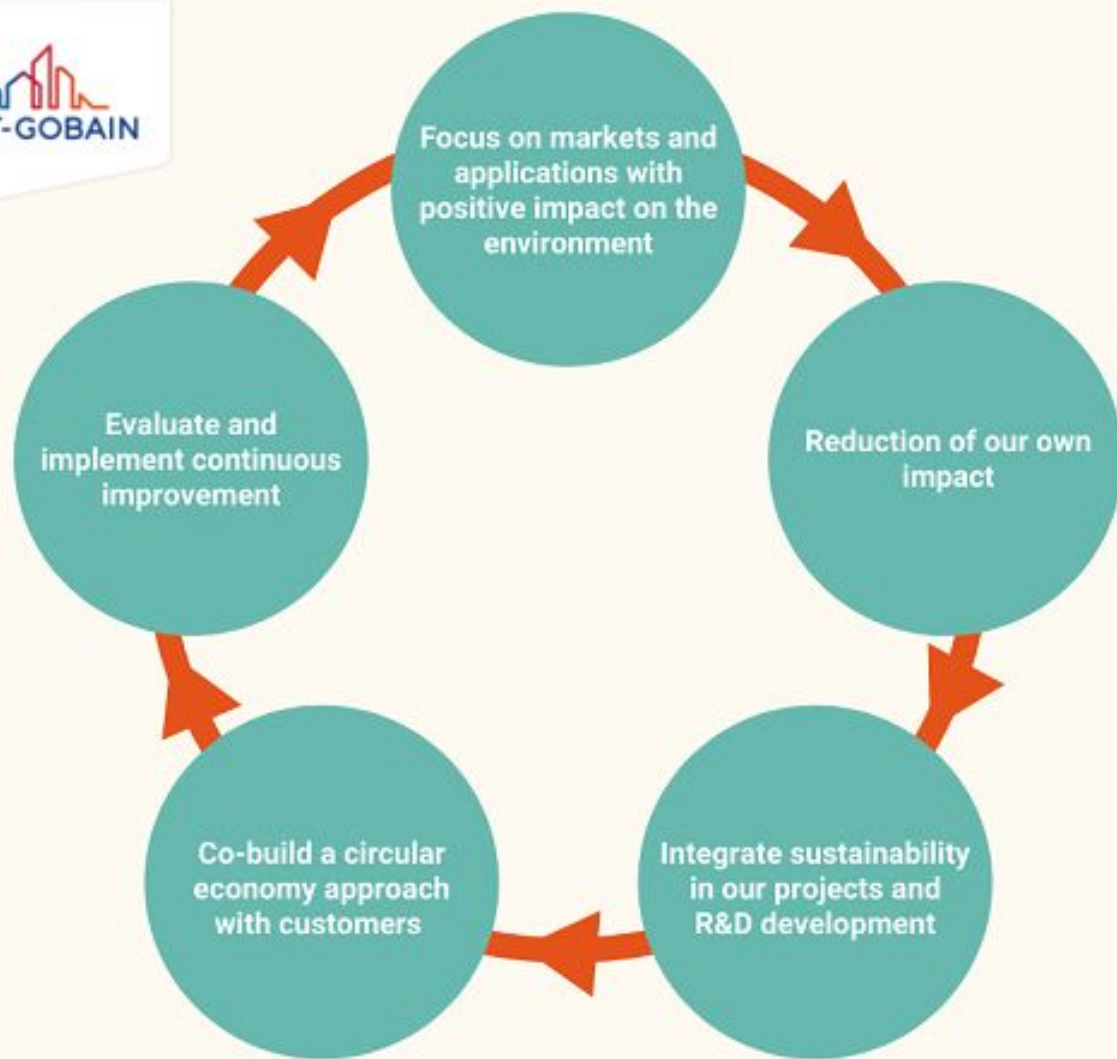


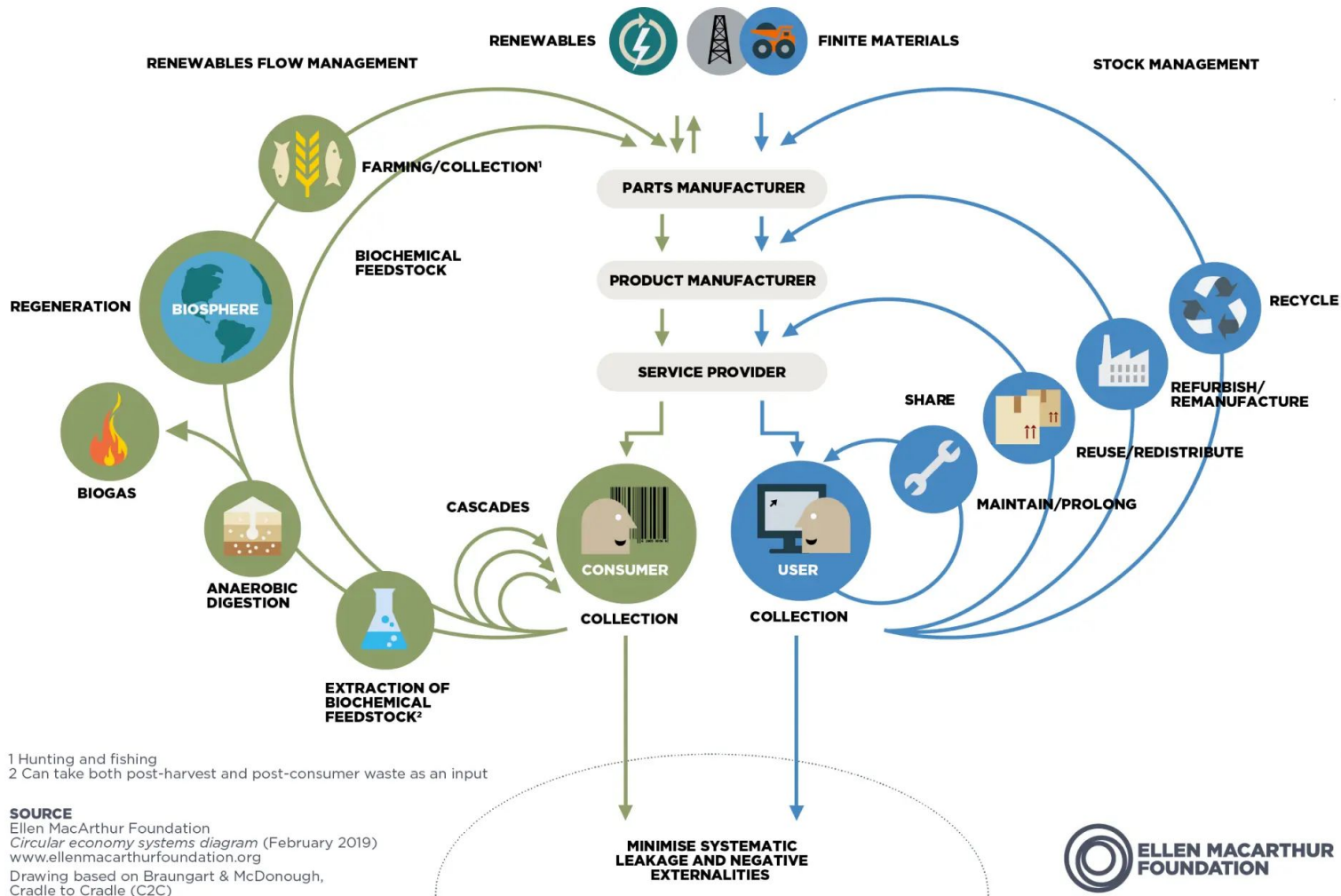
Embodied Carbon



SAINT GOBAIN OPERATING SUSTAINABILITY

A modern office interior with glass walls and wooden desks. The office is well-lit and features a mix of wood and metal materials. A person is visible in the background, and there are bookshelves and a desk with a computer monitor. The overall atmosphere is professional and contemporary.





1 Hunting and fishing
 2 Can take both post-harvest and post-consumer waste as an input

SOURCE
 Ellen MacArthur Foundation
Circular economy systems diagram (February 2019)
www.ellenmacarthurfoundation.org
 Drawing based on Braungart & McDonough,
 Cradle to Cradle (C2C)





p6

p7

p8



Raw Materials

Recycling and re-processing

Plasterboard paper and gypsum is separated- gypsum is reprocessed into new plasterboard / paper is sent to a secondary recycler.

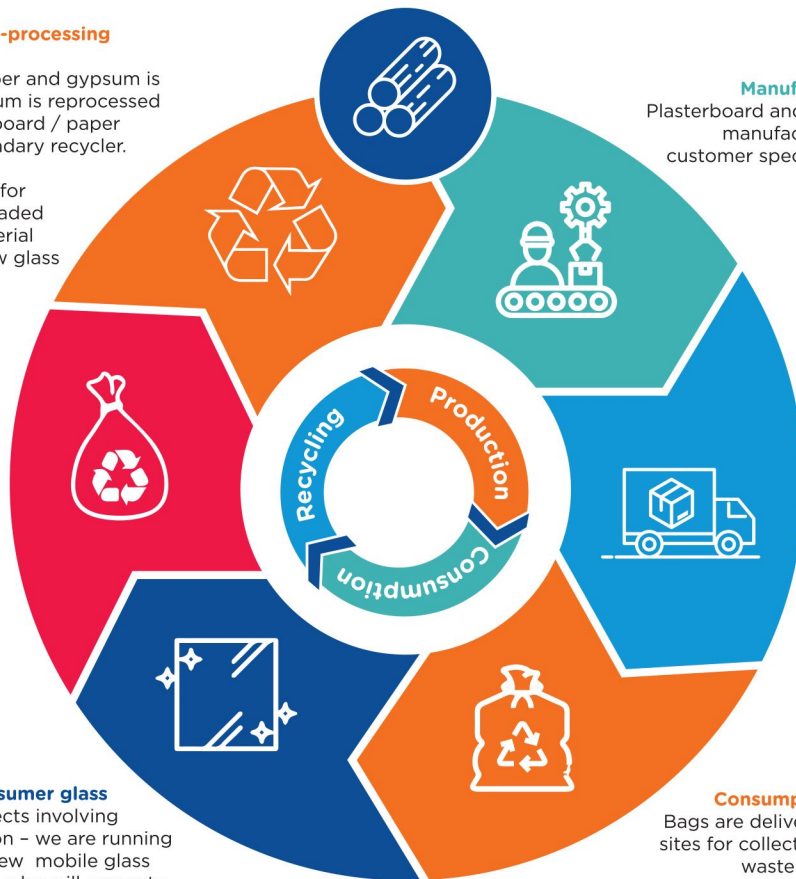
Glass is checked for impurities and loaded into the raw material feed to make new glass

Recovery

Full bags are collected and returned to Glass and Gypsum production sites for re-use

Recovery of post consumer glass

For construction projects involving demolition / renovation - we are running pilot projects with a new mobile glass crusher and separator who will separate the parts of old windows. Glass is returned to our manufacturing plant for reprocessing - other parts of the window are sent to third-parties for recycling



Manufacturing

Plasterboard and glass is manufactured to customer specification

Distribution

Plasterboard is distributed to the customer's construction site

Glass is distributed to a customer's processing sites

Consumption & Recovery

Bags are delivered to customer sites for collecting plasterboard waste and glass 'cullet'



CertainTeed Vinylrock - 1140-CRF-1

Category Ceilings
Subcategory Smooth Panels
Type Acoustic Ceiling Panels

A vinyl-faced gypsum panel, ideal in applications where repeat cleaning is required. Suitable for cleaning with common disinfecting chemicals. Meets USDA/FSIS sanitary standards for food processing, food service and hospital use. Suitable for use as a component in certain clean room assemblies (ISO 14644-1 Class 5/Fed. Std. 209E Class 100/M3.5). Does not contain formaldehyde.

[+ Add to Project](#)

[Contact Manufacturer](#)

[Rating System Credits](#)

[Get PDF](#)



Certifications and Standards

CA Section 01350

CDPH Standard Method V1.1-2010

CDPH Standard Method V1.2-2017

Environmental Product Declaration (EPD)

Health Product Declaration (HPD)



Recycled Content

The recycled content data from the manufacturing plant closest to the postal code setting is displayed first and used for calculating credit contributions. Changing the postal code setting at the top of the page will re-evaluate which manufacturing plant is closest.

Recycled Content - Post Consumer (%)

5.0%

Recycled Content - Pre Consumer (%)

94.0%

PRODUCT CERTIFICATION STRATEGY

Declare.

EPD®



certainteed
SAINT-GOBAIN

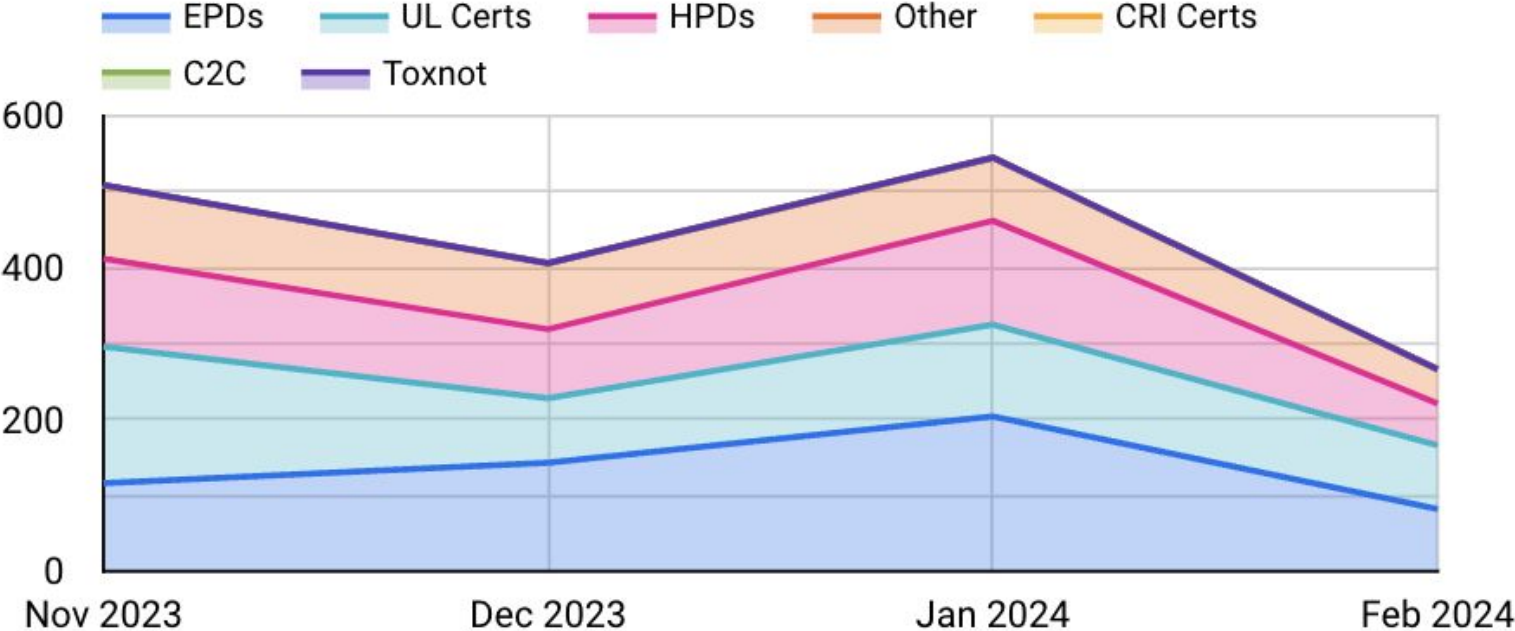


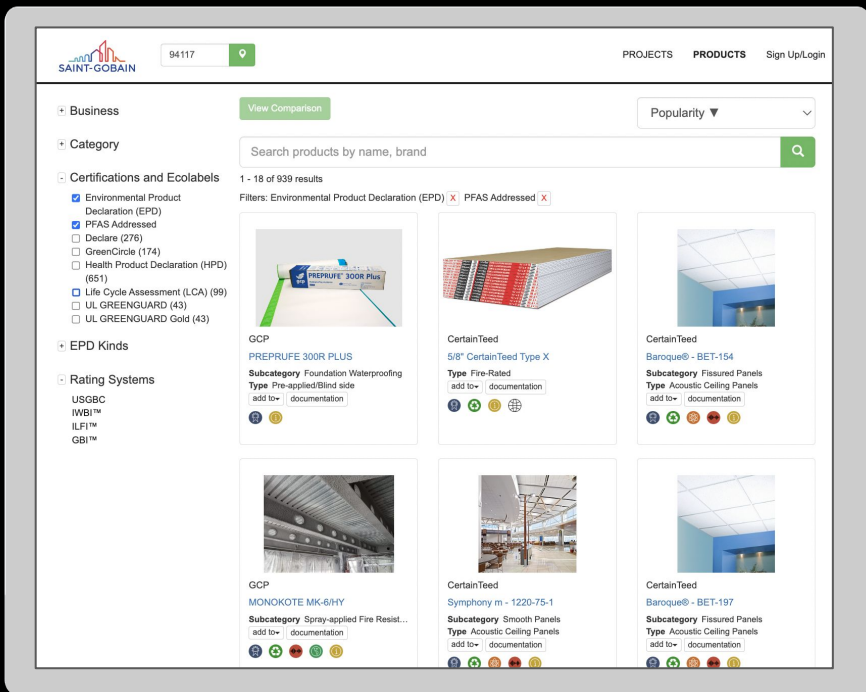
SageGlass
SAINT-GOBAIN

BY 2030, 100% of the Group's revenue is generated with products covered by verified LCAs (Life Cycle Analyses), or EPDs (Environmental Product Declarations), excluding distribution activity.

With more than 1,800 verified EPDs published in over 35 countries, the Group is the **world's leading supplier of verified EPDs** – by volume – in the construction sector.

DEMAND DRIVEN STRATEGY





EDUCATE & EMPOWER STAKEHOLDERS

- Multi-brand ecoPortal
- One stop shop for sustainability
- Measure everything
 - Demand
 - Time Savings
 - Customer Engagement

POWERED BY
 ecomedes

THE FUTURE





FUTURE

HOW MANY FRAMEWORKS? THE RISE OF A COMMON ASK.



Product certifications
enable compliance
analysis



Building Standards



Government



Gensler Perkins&Will

A&Ds



**HARVARD
UNIVERSITY**



BROWN

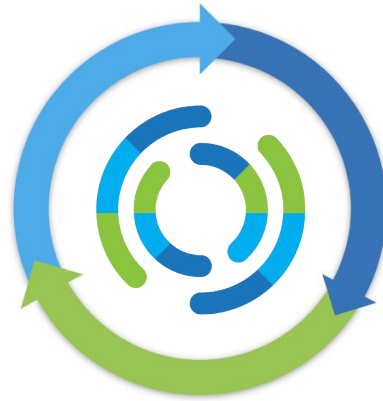
Universities

FUTURE

A COMMON ASK CAN CHANGE THE WORLD

Buyers (demand)

66% of F500 pledged NZ
Shift from vol → regulation



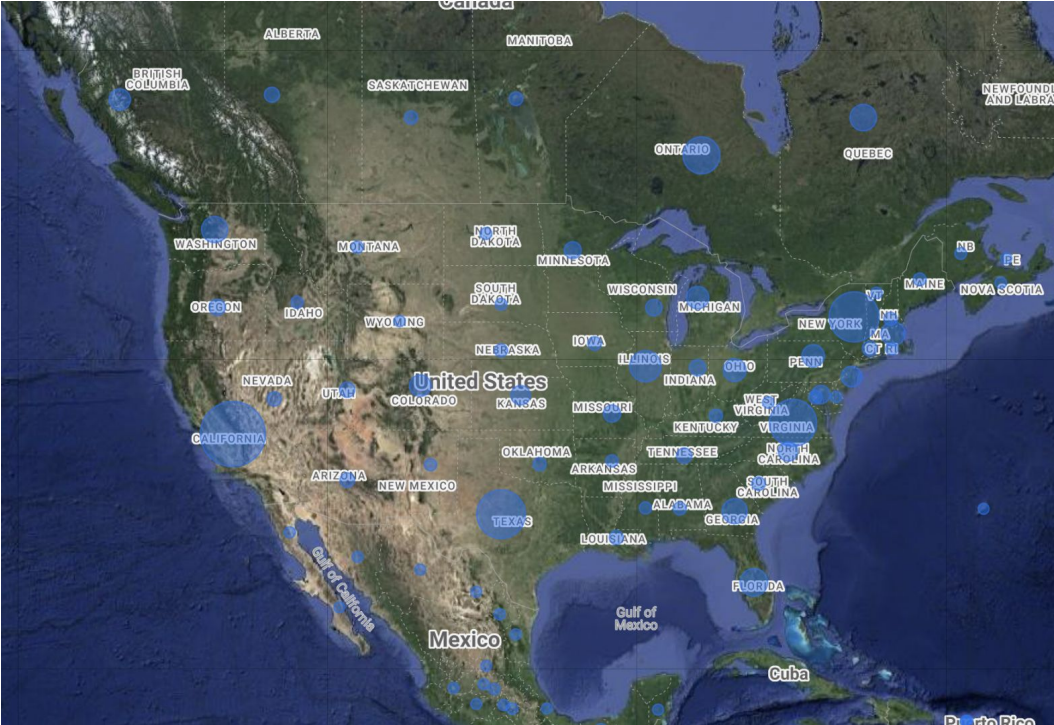
Manufacturers (supply)

10,000 Brands with 3rd party certs

Accessible Transparency Info

FUTURE

REGIONAL EXPANSION



Q&A